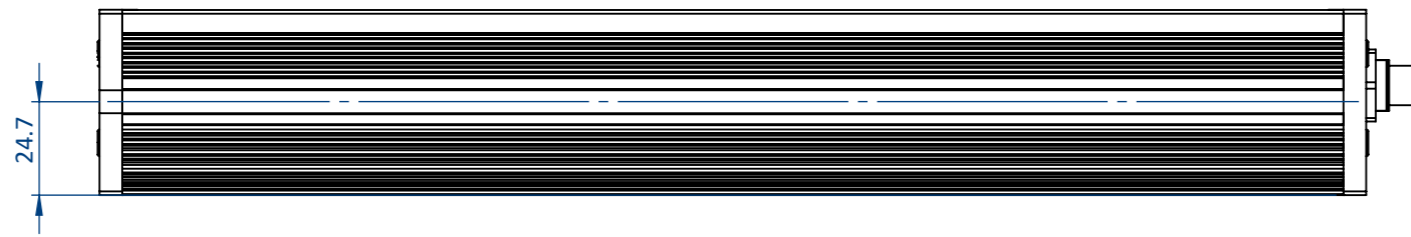
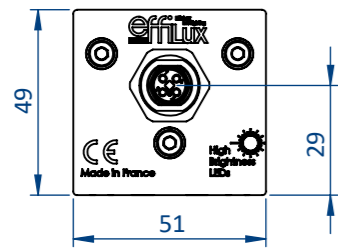
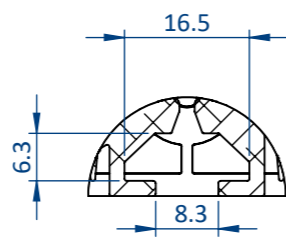
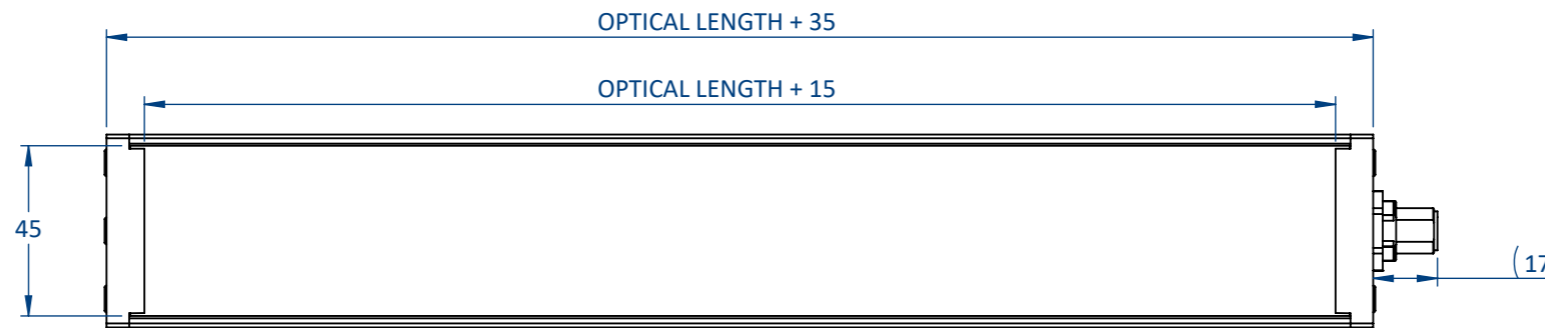
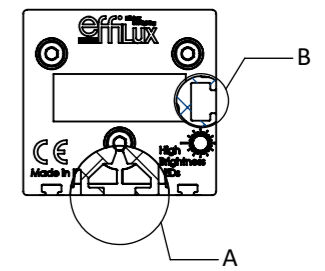


THIS DOCUMENT AND THE INFORMATION IT CONTAINS ARE PROPERTY OF EFFILUX AND CONFIDENTIAL. THEY SHALL NOT BE REPRODUCED NOR DISCLOSED TO ANY PERSON EXCEPT TO THOSE HAVING A NEED TO KNOW THEM WITHOUT PRIOR WRITTEN CONSENT OF EFFILUX

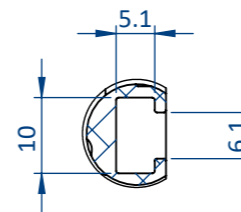
CE DOCUMENT ET LES INFORMATIONS QU'IL CONTIENT SONT CONFIDENTIELS ET SONT LA PROPRIETE EXCLUSIVE DE EFFILUX. ILS NE DOIVENT ETRE COMMUNIQUEES QU' AUX PERSONNES AYANT A EN CONNAITRE ET NE PEUVENT ETRE REPRODUITS NI DIVULGUES A TOUTE AUTRE PERSONNE SANS AUTORISATION PREALABLE ECRITE PAR EFFILUX



M12 OR M12P DEPENDING ON POWER CONSUMPTION. REFER TO THE DATASHEET

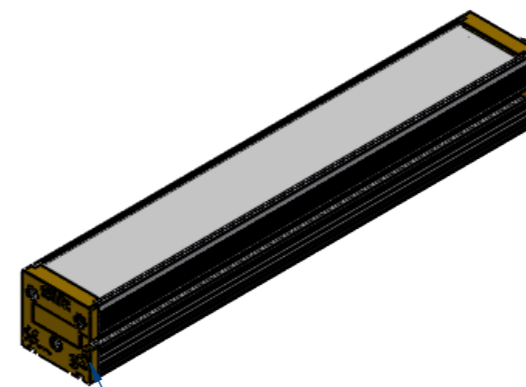


DETAIL A  
SCALE 1 : 1  
MOUNTING: T-NUT 8MM SLOT, M6



DETAIL B  
SCALE 1 : 1  
MOUNTING : NUT M6

NUMBER OF LED-XXX (STANDARD VERSION)	OPTICAL LENGTH	PRODUCT LENGTH	WEIGHT (KG)
1 LED	20	55	0,1
3 LED	60	95	0,3
5 LED	100	135	0,4
10 LED	200	235	0,7
15 LED	300	335	0,9
20 LED	400	435	1,2
25 LED	500	535	1,5
...	...	...	...
140 LED	2800	2835	7,9
145 LED	2900	2935	8,2



**ALWAYS OPEN THE PRODUCT FROM THIS SIDE**

**PLEASE REFER TO THE SPECIFIC DOCUMENTATION FOR WIRING LAYOUT**

Reference <b>STANDARD EFFI-FLEX</b>	IP <b>5X</b>	1 Rue de Terre Neuve Mini Parc du Verger Bâtiment E 91940 Les Ulis, France
Designation <b>EFFI-FLEX-XXX-ZZZ-WW-PP</b>		Mail: <a href="mailto:sales@effilux.fr">sales@effilux.fr</a> Tel : +33 9 72 52 70 03 <a href="http://www.effilux.com">www.effilux.com</a>
Revision /	Date 22/04/2024	Unit : mm
Scale 1:2	Size A3	Page 1/1
General tolerances ISO 2768 - fH-E		Effilux Efficient Led Lighting